



Badger Army Ammunition Plant Restoration Advisory Board

01 November 2018

Army Environmental Command delivers environmental services and solutions
to enable Army readiness and sustainability

Innovative Customer-Focused Partner

Serving the Rugged Professional

Agenda

- Introductions
- Groundwater Update
- Hydrogeology
- USGS Updates
- Health Studies
- PFOA/PFOS Update
- Gruber's Grove Bay Update
- Comment Period



Agenda

- Introductions
 - WDNR
 - Jason Lowery
 - Army Representative
 - Bryan Lynch
 - Linda Albrecht
 - Guest Speakers
 - Matthew Pajerowski – USGS
 - Curtis Hedman – WI DHS



Agenda

Groundwater Update Joel Janssen



Agenda

Health Studies Curtis Hedman



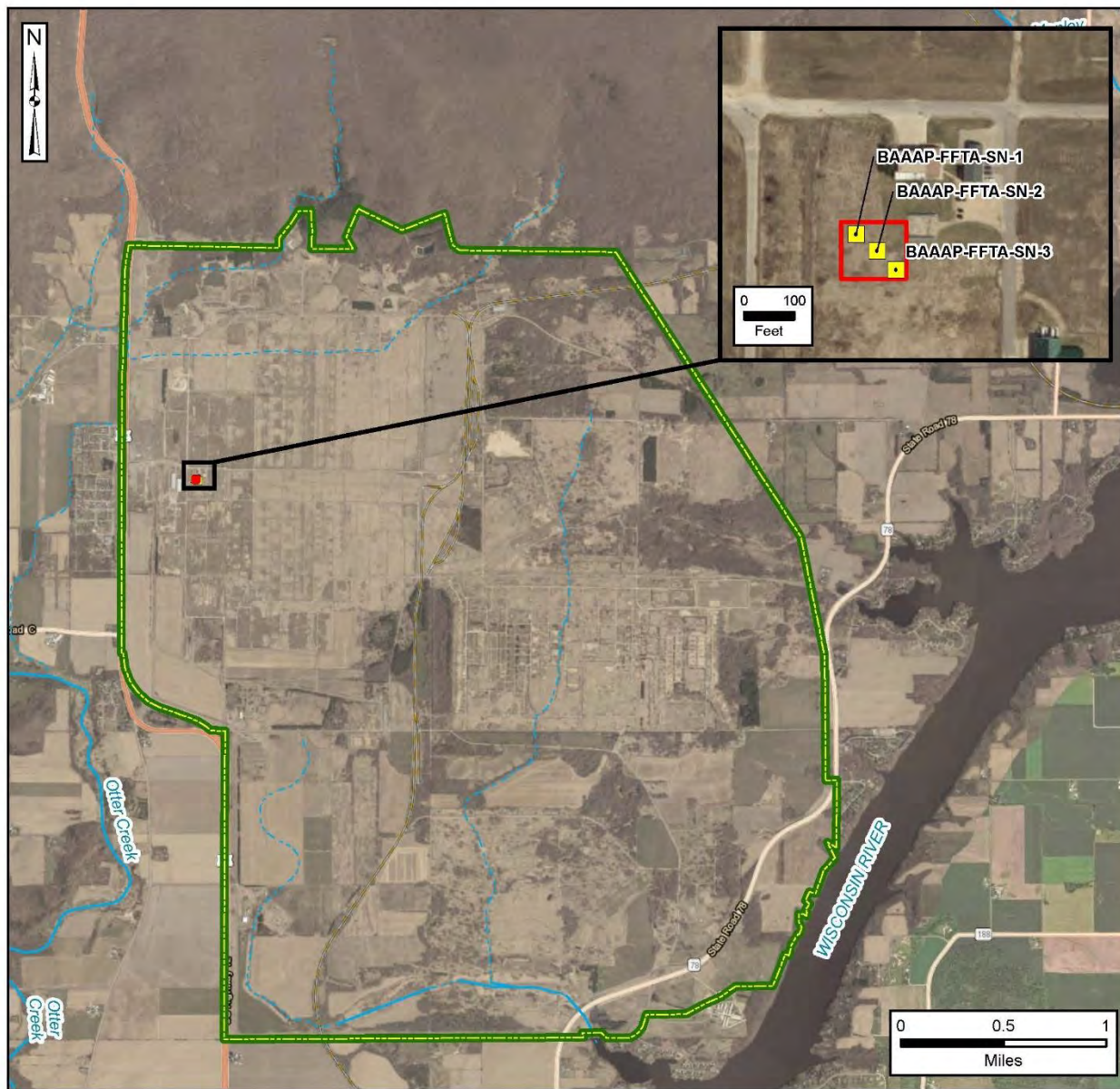
PFOA/PFOS

PFOA/PFOS Bryan Lynch



PFOA/PFOS Soil

Highest reading from 21 samples was combined PFOA/PFOS reading of 5 ppm



- Installation Boundary
- Approximate Firefighter Training Area
- Proposed Soil Sampling Location (samples will be collected at 5 feet below ground surface (bgs) and every subsequent 15 feet until the water table is reached; the water table is estimated to be approximately 100 ft bgs)
- River/Stream (Perennial)
- Stream (Intermittent)

Data Sources:
ESRI ArcGIS Online, Aerial Imagery

Coordinate System:
NAD 1983, Wisconsin State Plane South



PFOA/PFOS Surface Water

Highest
surface
water
sample was
7.2 ppt



- Installation Boundary
- Approximate Firefighter Training Area
- River/Stream (Perennial)
- Stream (Intermittent)
- Proposed Surface Water / Sediment Sampling Location

Internal Working Document - Internal Use Only

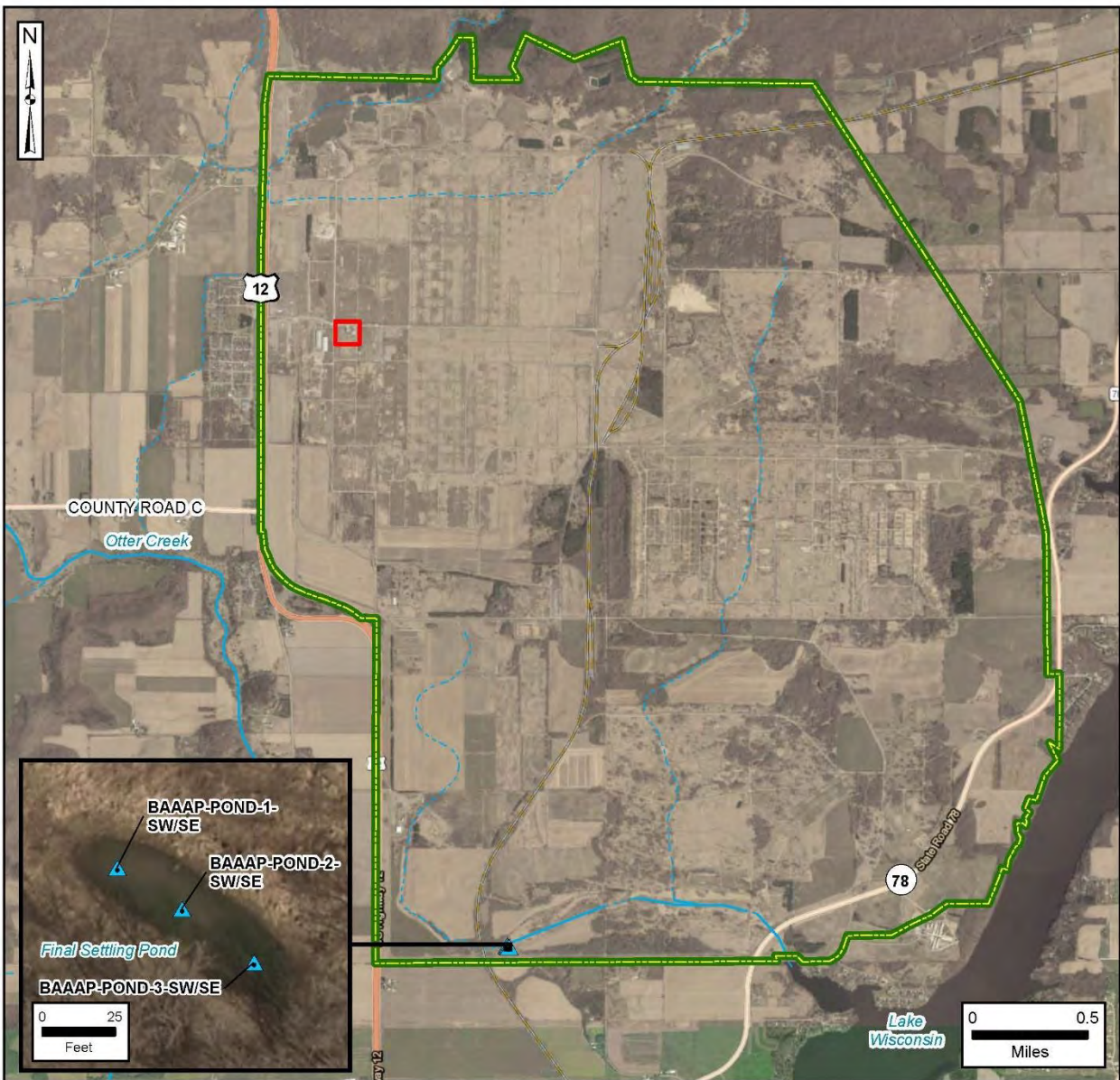
Data Sources:
ESRI ArcGIS Online, Aerial Imagery

Coordinate System:
NAD 1983, Wisconsin State Plane South



PFOA/PFOS Sediment

Sediment
samples
were non-
detect



- Installation Boundary
- Approximate Firefighter Training Area
- River/Stream (Perennial)
- Stream (Intermittent)
- Proposed Surface Water / Sediment Sampling Location

Internal Working Document - Internal Use Only

Data Sources:
ESRI ArcGIS Online, Aerial Imagery

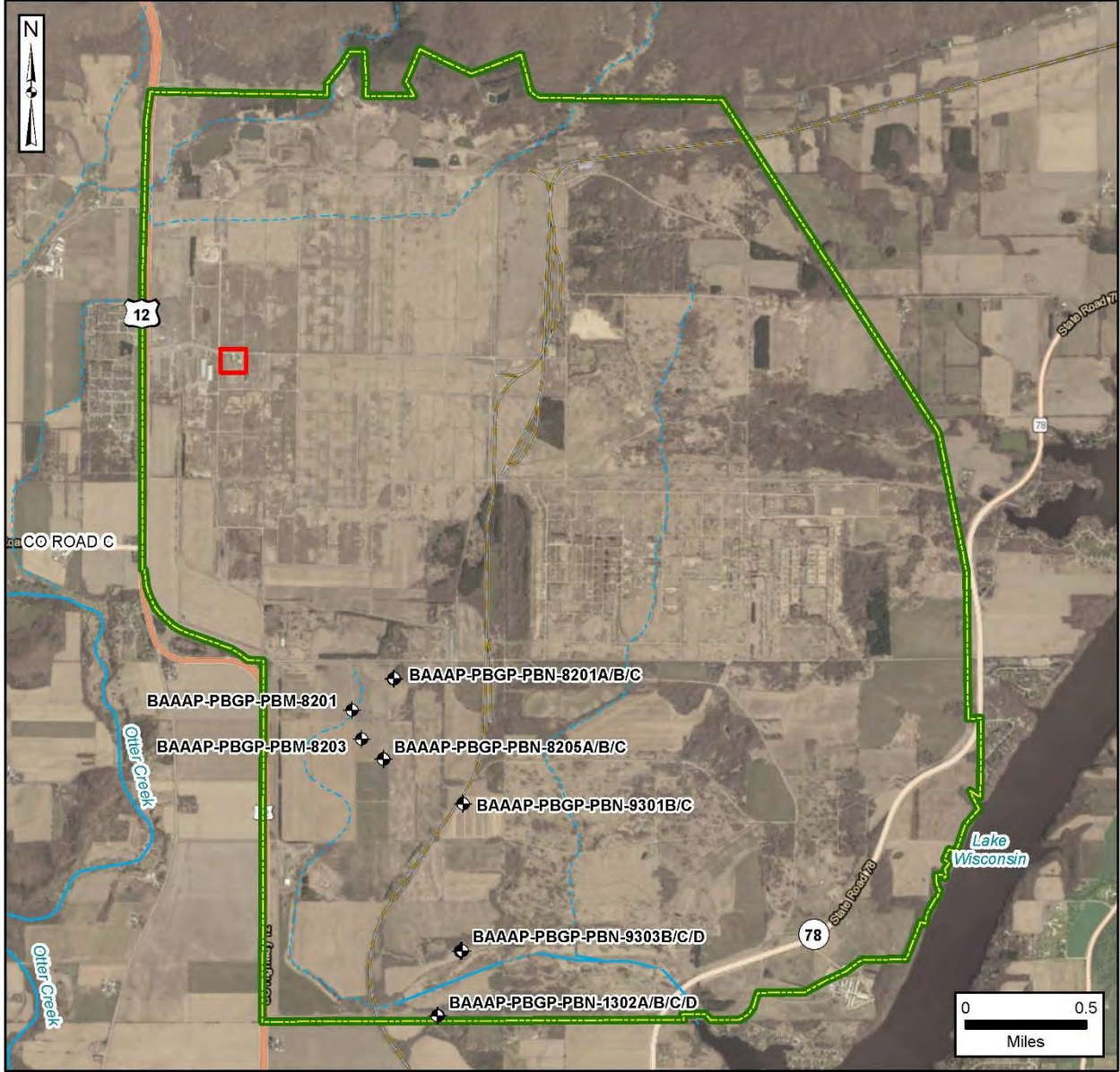
Coordinate System:
NAD 1983, Wisconsin State Plane South



PFOA/PFOS Groundwater

Highest
groundwater
sample was
19.5 ppt in
9303D

Well 9303C
was 11.6 ppt



- Installation Boundary
- Approximate Firefighter Training Area
- River/Stream (Perennial)
- Stream (Intermittent)
- Proposed Groundwater Sampling Location

Internal Working Document - Internal Use Only

Data Sources:
ESRI ArcGIS Online, Aerial Imagery

Coordinate System:
NAD 1983, Wisconsin State Plane South



Next RAB 1st Quarter 2019



Comments

