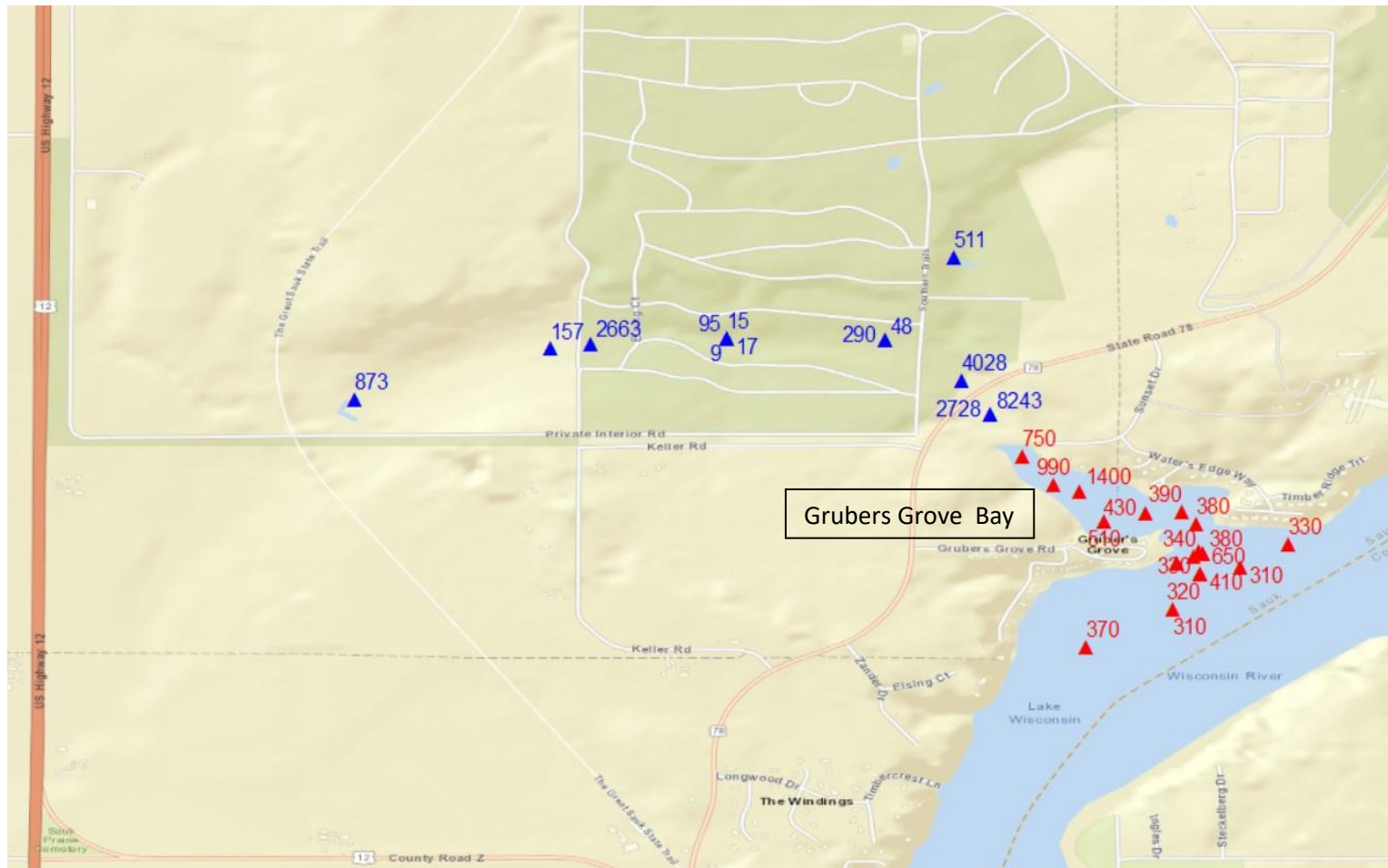


Total mercury concentrations in soil samples from Badger Army Ammunition Plant and bed sediment samples from Grubers Grove Bay and Wiegands Bay, 2019. Concentrations are in nanograms/gram (parts per billion). Reference: Janssen, S.E., and Krabbenhoft, D.P., 2019, Gruber's Grove Bay Mercury Site Assessment: U.S. Geological Survey data release, <https://doi.org/10.5066/P990MFHU>.



Total mercury concentrations in soil samples from Badger Army Ammunition Plant and bed sediment samples from Grubers Grove Bay, 2019. Concentrations are in nanograms/gram (parts per billion).

Reference: Janssen, S.E., and Krabbenhoft, D.P., 2019, Gruber's Grove Bay Mercury Site Assessment: U.S. Geological Survey data release, <https://doi.org/10.5066/P990MFHU>.